

Model RH3-R Temperature & Humidity Sensor

SPECIFICATION SHEET AND WIRING DIAGRAM



- Wall-mounted temperature and humidity sensor
- Attractive look
- 10' of wire included with each sensor, more available for purchase
- For model VM608E, or VM508E

Description:

The RH3-R relative humidity sensor utilizes a capacitive sensing element to deliver a proportional 4 to 20 mA*, **0 to 5VDC**, or 0 to 10VDC* output. Accuracy is maintained over the entire operating range using a thermistor for temperature compensation. The sensor also has on board DIP switches which allow the user to select the desired output signal, and can be powered by AC or DC power. In addition field calibration can be performed by using the on board increment and decrement DIP switches. Each RH-3 humidity sensor is calibrated using a NIST Traceable Temperature/Humidity Chamber. NIST certificates are available.
*Available upon request.

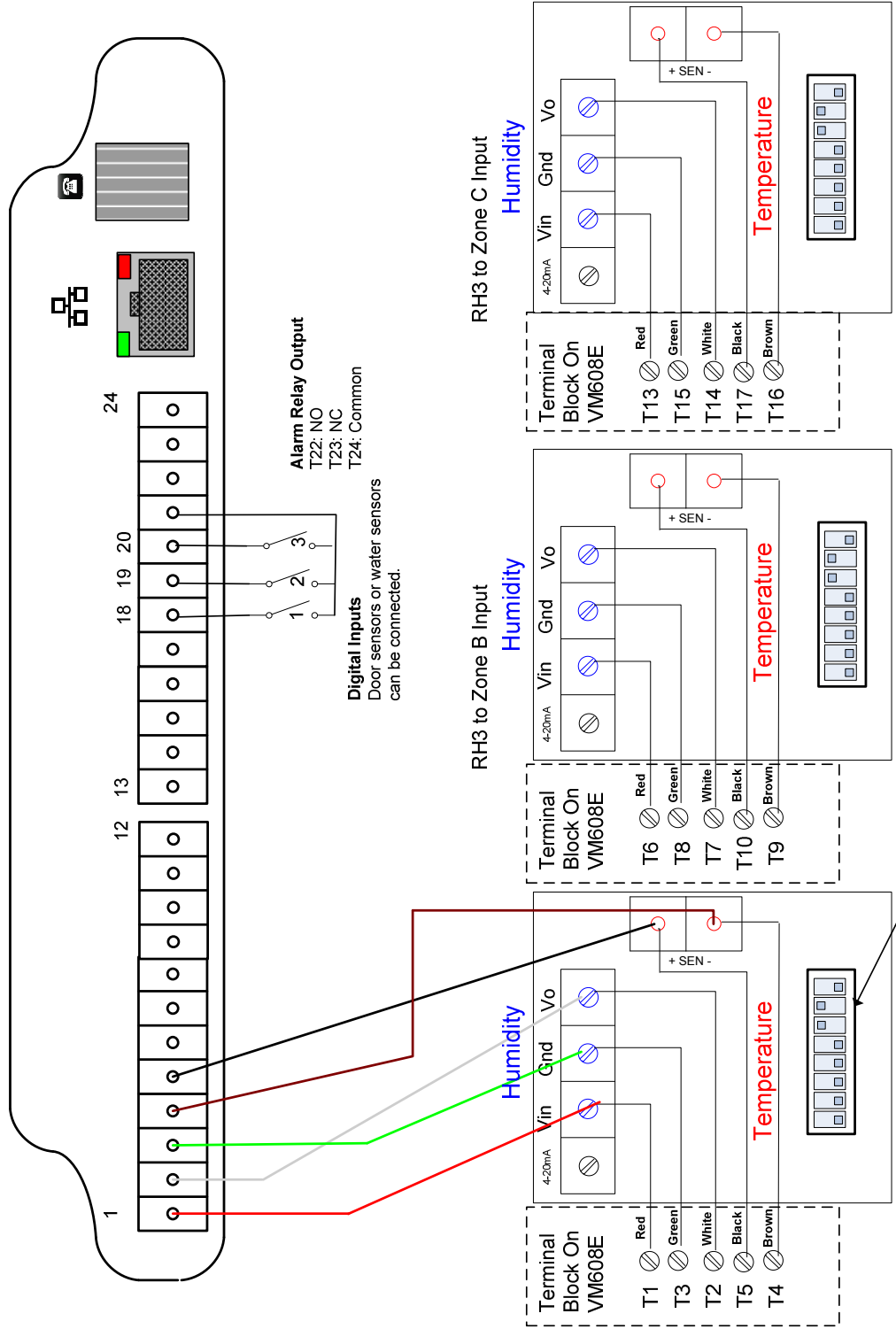
Specifications

RH3 Supply Voltage	0-5 VDC: 12 to 40VDC/18 to 28VAC (4K load min.)
Supply Current	8 mA Max.
RH3 Measurement Range	0 to 100%
RH3 Output	3-wire, 0-5 , 0-10 VDC*, or 4-20 mA*
Accuracy @ 77°F (25°C)	+/- 3% from 10% to 95% RH
Long Term Stability	Less than 2% drift / 5 years
Sensitivity	0.1% RH
Operating Environment	0 to 95% RH (non-condensing) 32 to 122°F (0 to 50°C)
RH3 Sensor Type	Capacitive
Temperature Accuracy	+/-0.06%@32°F (0°C) single Point
Approvals	CE, RoHS

VM608E

Temperature Guard

Wiring Diagram (side view of enclosure)



If the sensor isn't recognized, check for switches 6 and 7 in the up position.