



**User Programmable Features**

Maximum number of programmable callout numbers: 4  
 Maximum number of digits for callout numbers: 20  
 Maximum number of digits for the Local ID which is displayed when calling a pager: 20  
 Recording time for the Local Identification message: 5 seconds  
 Range of incoming rings before the VM500-8 answers: 1 to 20  
 Number of digits in programmable PIN: 4  
 All programmable sensor time delays: 0 to 999 minutes  
 Power outage alarm time delay: 0 to 900 minutes

**Specifications**

Temperature Measuring Range: 32°F to 125°F, ±2°F Accuracy  
 Humidity Measuring Range: 20% to 100% RH, 3%RH Accuracy  
 Power Requirements: 120VAC at 50/60 Hz wall mount transformer (included)  
 Outputs:  
     Relay: 30VDC 1A contacts  
     Alarm Buzzer: 85 dB  
 Electrical Connections: Two plug-in, 12 position terminal blocks  
 Material: Flame retardant ABS plastic, 94-5VA  
 Dimensions: Enclosure: 8.790" x 4.620" x 2.255" , Mounting Flange Holes: 8.250" x 3.500"  
 Ambient Operating Conditions: 32°F to 125°F  
 Shipping Weight: 2 lbs  
 Agency Compliance: Model VM500-8 FCC Approved and Registered, power supply UL listed

**Battery Options**

Option	Part Number Suffix	Description
20 Hour battery backup	B20	The B20 option increases the time the VM500-8 will operate up in the event of a power outage for to 20 hours, depending on the number and duration of telephone calls.
30 Hour battery backup	B30	The B30 option increases the time the VM500-8 will operate up in the event of a power outage for to 30 hours, depending on the number and duration of telephone calls.

## COMPUTER ROOM GUARD WITH DCP-E

- ◆ You need to receive alarm emails to notify you if your Temperature Guard detects a problem.
- ◆ You need to maintain a log file of the data collected from your Temperature Guard.
- ◆ Add the DCP-E option to any Temperature Guard model to form a complete monitoring and alarming solution. The Temperature Guard will call and send emails detailing the problem so you can quickly take corrective actions to avoid an expensive loss of property.
- ◆ The Data Capture Program automatically collects and maintains a log of the data obtained from your Temperature Guard.

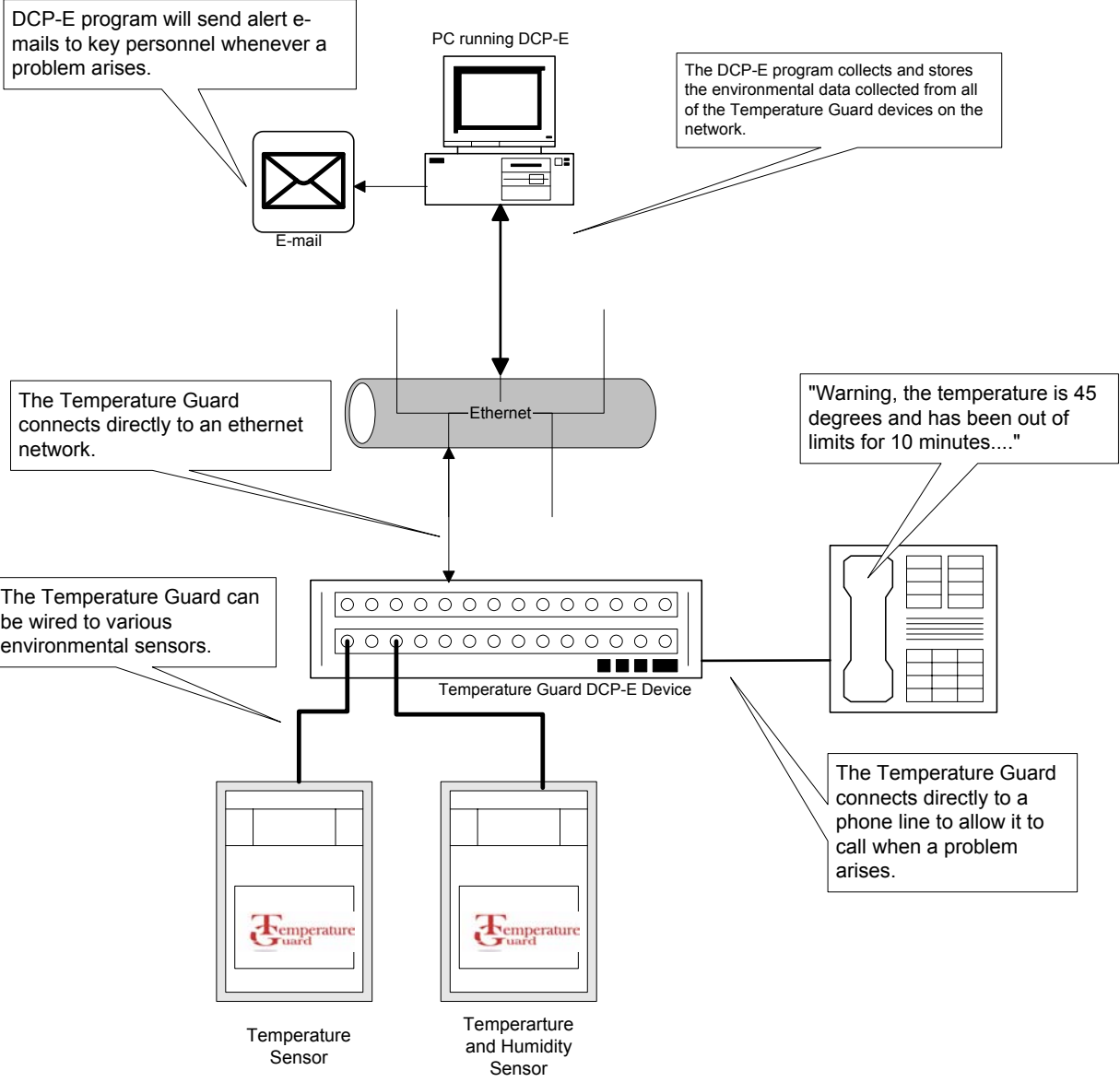
### Features

- View real time data.
- View historical data.
- Automatically sends alarm emails to key personnel that specifies the exact location and cause of the problem.
- Maintains secure data log files for all data.
- Easily create and print graphs over specified time periods for any data.
- Remotely check the real time status with a web browser.
- Program limits remotely.

### Specifications

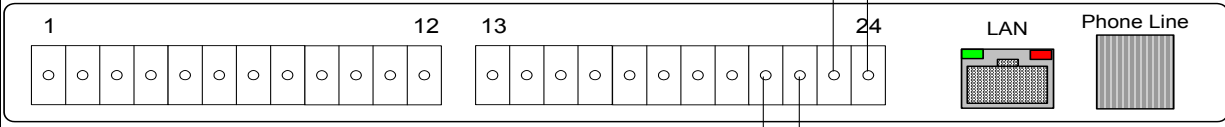
<b>LAN:</b>	Ethernet 10Base-T or 100Base-TX (Auto-Sensing)
<b>Transport Protocol:</b>	TCP/IP, UDP
<b>Connector</b>	RJ45
<b>Regulatory Compliance:</b>	FCC Class B compliant — EMC compliant Class B limits of EN 55022:1998 EN55022: 1998 + A1: 2000 + A2: 2003 Class B EN61000-3-2: 2000 Class A EN61000-3-3: 1995 + A1: 2001 EN55024: 1998 + A1: 2001 + A2: 2003 FCC CFR 47, PART 15 SUBPART B CLASS B ICES-003 ISSUE 4: February 2004 CLASS B AS/NZS CISPR 22:2002 CLASS B CISPR22: 1997 + A1: 2000
<b>LED Indicators:</b>	10Base-T connection 100Base-TX connection Link & activity indicator - Full/half duplex
<b>Ambient Operating Conditions:</b>	32°F to 125°F © 2005 Microtechnologies Incorporated

## A Networked Temperature Guard with DCP-E



### Computer Room Guard Wiring Diagram (side view of enclosure)

Terminal Block Designations (LAN is on DCP-E model)



**Water Sensor**  
-connect up to 4 WTR-1040 water sensors in parallel